



## **iRITOP**

### **RITOP system operation control via iPad**

**MOBILE VISUALIZATION • PLANT OBJECT PRESENTATION •  
MAIN PARAMETERS • STATISTICAL ANALYSES**

Visual control at all times

## The perfect tool to provide a full-scale overview

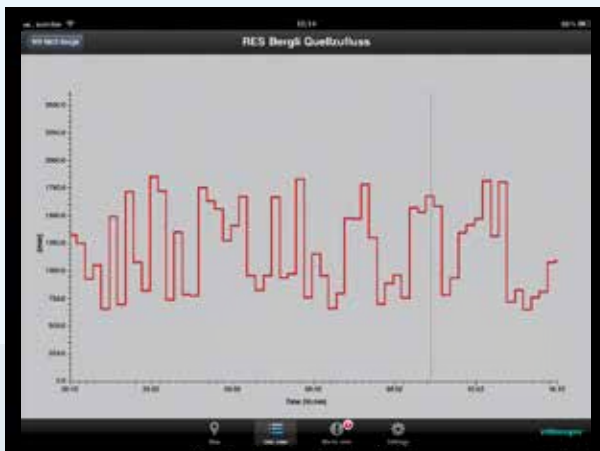
iRITOP is a handy iPad or iPhone application for supply and disposal networks and power plants: with iRITOP, the on-call staff obtains a quick overview of critical alerts and important parameters. The information is assigned to the system objects which are realistically represented in the application in terms of their geographic location.

Today, a remote operation from a control room is typically done with a laptop and a secured point-to-point connection to the central system server via a modem or the Internet: upon receiving an alarm automatically triggered by the system, e. g. to the operator's cell phone, he must dial into the system in order to obtain detailed information. This is a time consuming process and not possible from all locations.

iRITOP complements the process control system RITOP with a new tool for on-call staff.



Via iPhone or iPad, system conditions can be checked and alarms acknowledged in a matter of seconds.



The statistical development of selected parameters is graphically displayed in order to facilitate quick decisions about whether or not a situation requires operator intervention or even a service call on-site.

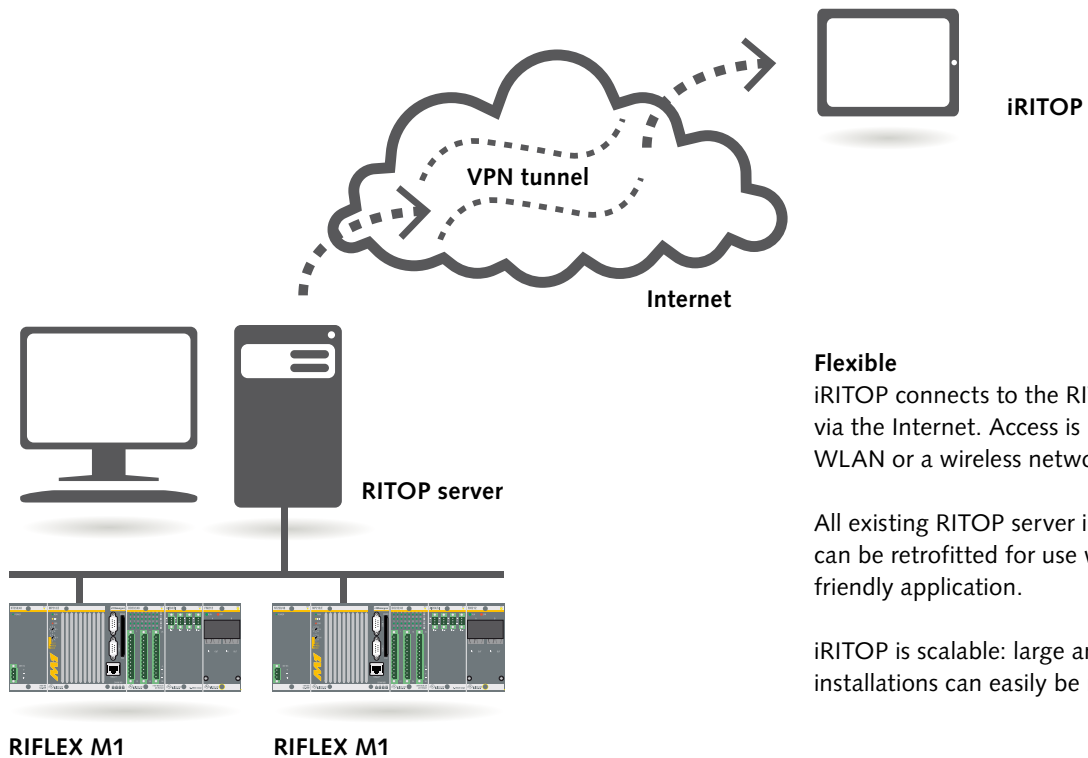


Google Maps is used to locate and visualize the system component triggering the alarm.

## Customized solution

# Functional and secure

The functions available with iRITOP are tailored to the customer's needs, configured on the RITOP server at the control room, and assigned to the geographical specifications of the respective structures. Password protected access to the RITOP server and exclusive assignment of authorized iPads guarantee security.



### Flexible

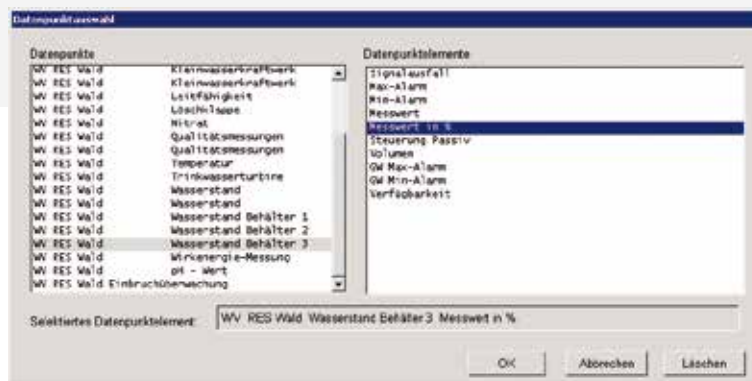
iRITOP connects to the RITOP server via the Internet. Access is managed via WLAN or a wireless network (3G).

All existing RITOP server installations can be retrofitted for use with this user-friendly application.

iRITOP is scalable: large and small installations can easily be monitored.

### Security is paramount

All authorized iPads are registered on the server with a unique Mac address. In case of loss or theft, the respective devices are simply locked on the server.



### Easy configuration

The data point elements of the structure selected in iRITOP are assigned on the RITOP server.

For each data point element, the data points can be individually selected and arranged in the structure list.



## Specifications

### System requirements

- Apple iPad or iPhone
- RITOP Server version 2.16 or higher
- Internet access (WLAN, 3G)

### Application

Available at the Apple App Store.

Rittmeyer develops, manufactures and installs instrumentation and process control system solutions for the water and energy sector. Founded in 1904, Rittmeyer has commissioned more than 20,000 installations to date. With five subsidiaries, a sales and representative office, and agencies in over 25 countries, we operate worldwide.

Thanks to state-of-the-art technology, world class expertise and highest quality we provide our customers with reliable, precise and tailored solutions.

### Rittmeyer

A subsidiary  
of the BRUGG group.

**SWITZERLAND (Headquarters)**  
Rittmeyer AG  
Inwilerriedstrasse 57  
Postfach 464  
CH-6341 Baar  
Phone: +41 41 767 10 00  
Fax: +41 41 767 10 70  
Email: [info@rittmeyer.com](mailto:info@rittmeyer.com)

**Subsidiaries in**  
Germany  
Austria  
Italy  
France  
Croatia

**Sales office in**  
USA

**Representative office in**  
Singapore