

BM SERIES WAVE COMPACT 26 GHz

TECHNICAL DETAILS

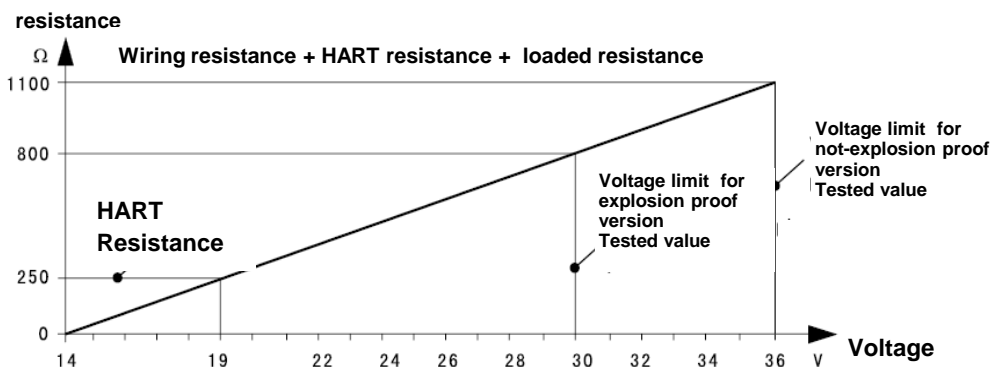
CW58 for liquids and solids on tanks

Applications: Storage tanks with hazardous working conditions.

| | |
|-----------------------------------|---|
| Range: | until 70 m |
| Accuracy: | 15 mm |
| Process connection: | G 1 ½ A-NPT flanges DN50, 80,100,150, 200, 250 PP / PTFE / SS 316L / GIMBAL |
| Antenna: | conical Ø 48, 78, 98, 98 (Lengthen), 123 |
| Materials: antenna: | AISI 316L / PP / PTFE |
| housing: | plastic PBT-FR / Aluminium / AISI |
| flanges: | AISI 316L / PP / PTFE |
| Working temperature: | -40...400°C |
| Storage temperature: | -40 ÷ 80°C |
| Relative umidity: | <95% |
| Pressure: | -1 ÷ 16 bar |
| Resistance to vibrations: | mechanical vibrations 10m/s2, 10÷150Hz |
| Frequency: | 26 GHz |
| Angle emission lobe: | Ø40 > 22°; Ø48 > 18°; Ø75 > 10°; Ø95 > 8°; |
| Interval of measure: | ~1sec |
| Interval of updating: | ~1sec |
| Resolution display: | 1mm |
| Supply 2 wires version: | |
| - Input voltage: | 15÷36Vdc |
| - Absorption: | max. 22.5mA |
| - Ripple allowed: | <100Hz, Uss>1V; 100Hz÷100KHz, Uss<10mV |
| Supply 4 wires version: | |
| - Standard input version voltage: | 24Vdc ±10%; 230Vac ±10% |
| - Absorption: | max. 4VA, 2W |
| Output signal: | 2/4 wires 4-20 mA, HART |
| Resolution: | 1,6µA |
| Fixed signal for anomaly: | 20.5mA; 22mA; 3.8mA |
| Resistance 2 wires version: | see the following diagram |
| Resistance 4 wires version: | max 500 ohm |
| Time of integration: | 0÷20s, programmable |
| Cables entry: | 1x PG 13.5 |
| Weight | until ~10 kg (depending by flange Ø) |



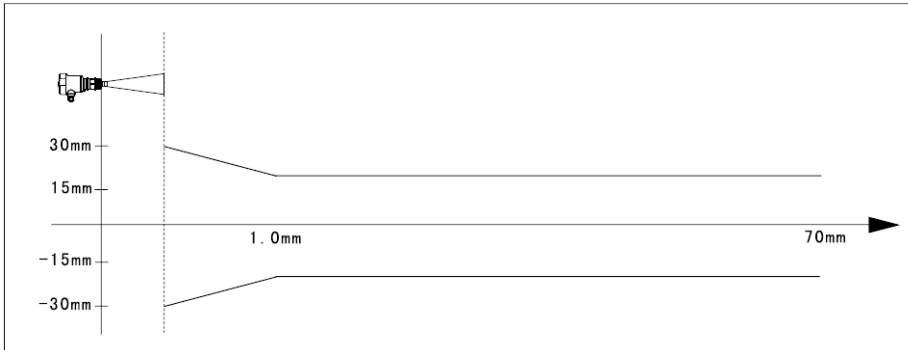
Diagram of loaded resistance, 2 wires version



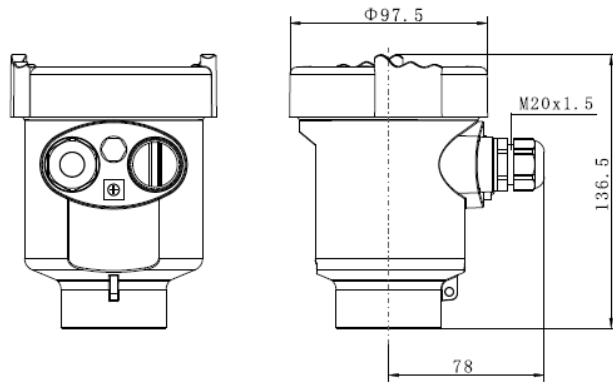
BM SERIES WAVE COMPACT 26 GHz

TECHNICAL DETAILS CW58 - follow

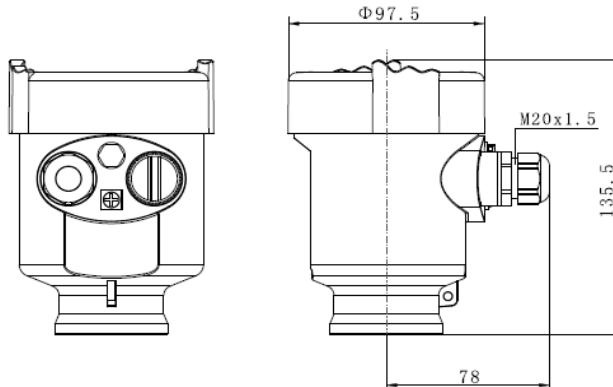
Precision



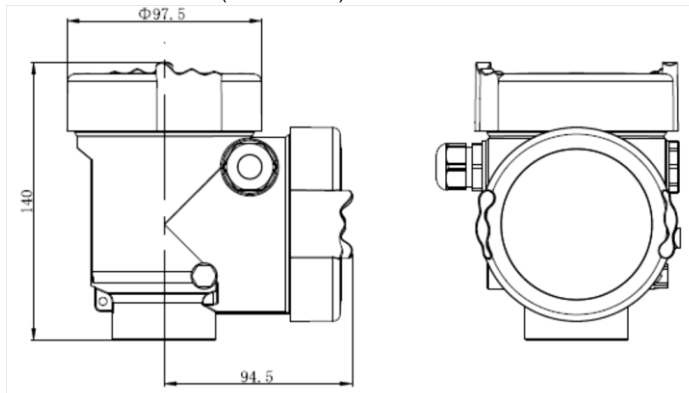
Dimensions with AL/316L frame



Dimensions with PBT-FRL frame



Dimensions with AL (2 chambers) frame

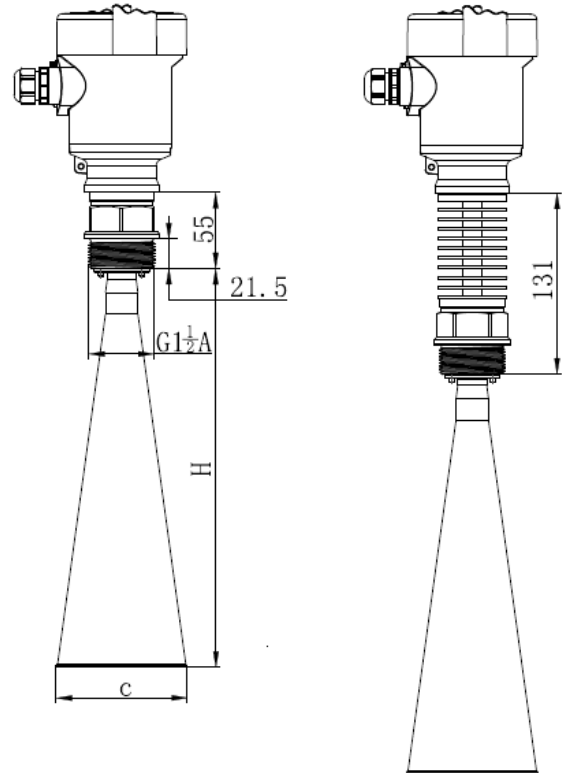


BM SERIES WAVE COMPACT 26 GHZ

TECHNICAL DETAILS CW58 - follow

Dimensions, threaded version

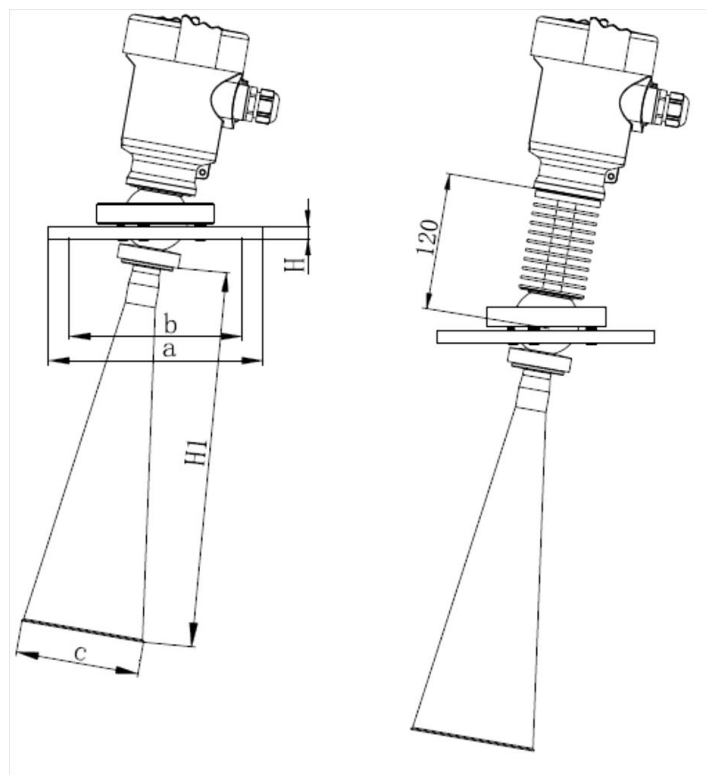
| | c | H |
|-----|------|-----|
| 1½" | Φ 40 | 100 |
| 2" | Φ 48 | 120 |
| 3" | Φ 75 | 200 |
| 4" | Φ 95 | 300 |



Dimensions, flanged version

| | c | H1 |
|-----|------|-----|
| 1½" | Φ 40 | 100 |
| 2" | Φ 48 | 120 |
| 3" | Φ 75 | 200 |
| 4" | Φ 95 | 300 |

| | a | b | H | d |
|-----------|-------|---------|--------|-----------|
| DN 50/2" | 165mm | 122.8mm | 11.5mm | 4x Φ 19mm |
| DN 80/3" | 200mm | 156.2mm | 11.5mm | 4x Φ 19mm |
| DN 100/4" | 220mm | 182.5mm | 11.5mm | 4x Φ 19mm |





BM SERIES WAVE COMPACT 26 GHZ

ORDERING CODE CW58

P Standard

Type of antenna / Material

- B (T Type) Horn Antenna Ø 48mm / Stainless Steel 316L
- C (T Type) Horn Antenna Ø 78mm / Stainless Steel 316L
- H (T Type) Horn Antenna Ø 98mm / Stainless Steel 316L
- I (T Type) Horn Antenna Ø 98mm (Lengthen) / Stainless Steel 316L
- J (T Type) Horn Antenna Ø 123mm / Stainless Steel 316L
- K (S Type) Horn Antenna Ø 98mm / PP / PTFE Dust Shield
- L (S Type) Horn Antenna Ø 98mm (Lengthen) / PP / PTFE Dust Shield
- M (V Type) Horn Antenna Ø 98mm / SS316L / PTFE Dust Shield
- N (V Type) Horn Antenna Ø 98mm (Lengthen) / SS316L / PTFE Dust Shield
- P (V Type) Horn Antenna Ø 123mm / SS316L / PTFE Dust Shield
- Q (W Type) Parabolic Antenna Ø 198mm / SS316L
- R (W Type) Parabolic Antenna Ø 246mm / SS316L
- X Special type (on request)

Process Connections / Material

- GP (H Type) Thread G 1½ A / SS 316L
- GA (H Type) Thread G 1½ NPT / SS 316L
- GB (G Type) Thread G 1½ A / PP
- GC (J Type) Thread G 1½ NPT / SS 316L / -60...+250°C
- GD (K Type) Thread G 1½ NPT / SS 316L / -60...+400°C / 40MPa
- GE (I Type) Thread G 1½ A / SS 316L / Sweeping
- GF (E Type) Thread G 1½ A / SS 316L / -60...+150°C
- GG (E1 Type) Thread G 1½ A / SS 316L / -60...+250°C
- GX Speciale type (on request)

Flange / material

| Material Type | PP (L TYPE) | PTFE (L TYPE) | SS316L (M TYPE) | GIMBAL (PP) (N TYPE) | GIMBAL (SS) (P TYPE) |
|------------------|----------------|------------------|--------------------|----------------------------|----------------------------|
| DN50 | FA | FB | FC | ---- | ---- |
| DN80 | GA | GB | GC | ---- | ---- |
| DN100 | HA | HB | HC | HD | HE |
| DN125 | IA | IB | IC | ID | IE |
| DN150 | JA | JB | JC | ---- | ---- |
| DN200 | KA | KB | KC | ---- | KE |
| DN250 | LA | LB | LC | ---- | LE |

F0 No Flange

FX Special Type



BM SERIES WAVE COMPACT 26 GHZ

ORDERING CODE CW58

Seal / Working Temperature

- 2 Viton / -60...150°C
- 3 Kalrez / -60...250°C
- 4 Graphite / -60...400°C

Electronic

- B 4...20 mA HART (2 wires)
- C 4...20 mA / 22,8...26,4 VDC / HART 4 wires
- D 4...20 mA / 198...242 VAC / HART 4 wires
- E 4...20 mA 22,8...26,4 VDC / HART 2 wires

Housing / Protection

- A Aluminium / IP67
- B Plastic / IP66
- D Aluminium (2 chambers) / IP67
- G Stainless Steel 316L / IP66 / IP67

Wiring

- M M20x1.5
- N ½ NPT

Display / Programming

- A YES

Note:

- The size of the flange refers to GB/T9119-2000 PN16. the thickness of the flange is 15mm.
- DN100 flange is suggested when Parabolic Antenna is chosen
- The user have to build the flange with the same size of the Parabolic Antenna